

MPC News

February 2012

Touchstones of the Season of Lent

Lent invites us to set aside time for spiritual practices that deepen our faith. Lenten study groups provide community and spiritual nurture. Evening worship services on Ash Wednesday, Maundy Thursday and Good Friday offer what one writer called “touchstones to the season, or blazes on the trail that keep us on track.”*

- ◆ On Ash Wednesday, Feb. 22, 7 p.m., we center ourselves and examine our lives. What is life-giving? What is broken? How are we being called to return to God and reconnect with the Holy?
- ◆ On Maundy Thursday, Apr. 5, 7 p.m., we remember Christ’s self-giving love for his friends. Through the symbolic action of hand washing, we honor the compassionate presence that is the heart of our faith. How am I being called to give of myself to nurture others?
- ◆ On Good Friday, Apr. 6, 7 p.m., we remember the selfless love Christ has for the world. How am I being called to re-evaluate my life and follow where God leads? Where do I see signs of hope, even in darkness?

I invite you, this Lent, to set aside time for additional worship and spiritual practices. The readings and ritual actions of these contemplative evening services follow a different flow than Sunday morning worship. If you haven’t been to one of these services before, now is a great time to try one out!

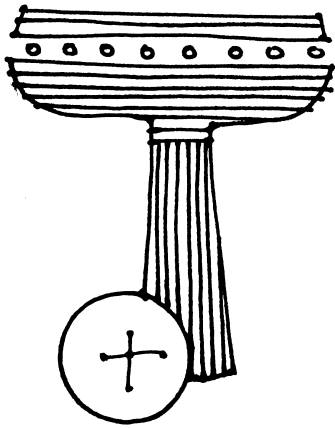
As we journey together on God’s paths of grace and newness this Lent, may you experience a deeper sense of wholeness and connection with the Holy.

Grace and every good thing,

Katie



*This quote and many of the ideas here are drawn from an article in the *Seasons FUSION* Ash Wednesday resources for Lent 2012.



Giving Update

July 1—Dec. 31 2011	Actual	Annual Budget (session approved)
Income	121,435	218,867
Expenses	<u>109,100</u>	<u>255,711</u>
Difference Surplus/(Deficit)	12,335	<u>(36,844)</u>

Deacons

2012

Dave Adams
Jan Braman
Phyllis Zimmerman
Chris Didway
Ruth Young

2013

Nancy Seigneur
Marlene Graham*
Sarah Carver

**chair*

2014

Jan Bunte
Wayne Sabin
Sharon Wullbrandt

Session

Administration

Dave DeVore*
Verne Duncan
Ross Cottrell (Personnel)

Communication Team

Marilyn Zetterberg

Congregational Ministries

Melissa Thomsen*

Community Ministries

Claire Hobson*

Christian Education

Cherie Kennedy*
Rusty Garrison (also clerk)

Stewardship

Kevin Bixby*

Worship

Nancy Killian*
Kelley Gutman

**chair*



Sunday Mornings

February 5

- ◆ 10 a.m. Communion Worship, followed by church school for all ages.
- ◆ 11:15 a.m. Adult Education: Amazing Grace: The Most Recognized Hymn in the World. Who wrote this amazing hymn and what is its long, history? The class will include listening to audio examples.

February 12

- ◆ 10 a.m. Worship, followed by church school for all ages.
- ◆ 11:15 a.m. Adult Education: The Why's and How's of Forgiving Yourself, an extension of our January program. We'll put this practice in a Christian, spiritual context, focus on realistic examples, and suggest practical ways to forgive self.

February 19

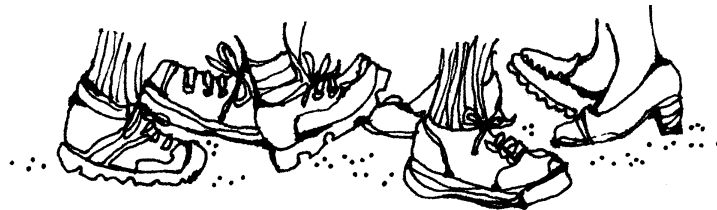
- ◆ 10 a.m. Worship, followed by church school for all ages.
- ◆ 11:15 a.m. Adult Education: "My Recent Trip to Haiti with Habitat for Humanity," with Jill Winegar. Slides, Q&A, and Jill's personal experiences. She just came back from working in a group with Jimmy and Rosalynn Carter. For online details, see www.habitat.org

February 26 First Sunday of Lent

- ◆ 10 a.m. Worship, followed by church school for all ages.
- ◆ 11:15 a.m. Adult Education: Spiritual Formation Sunday, second in a monthly series. Opportunities to explore spiritual practices for contemplation and action.

Classroom Locations

- ◆ Pre-School: next to the nursery; sing in the music director's office, 11:45 a.m.-noon
- ◆ K-5: upstairs; sing in the music director's office, 11:45 a.m.-noon
- ◆ Middle School/High School: downstairs
- ◆ Adult Education: Schmidt Hall; Bible Study: Fireside Room



Youth Activities

Sun., Feb. 5	11:15 a.m.-noon 2-6 p.m. 6-7 p.m.	<ul style="list-style-type: none"> ◆ Youth Sunday School ◆ High School Youth at Potluck in the Park. ◆ Confirmation Class at Moreland Pres.
Tues., Feb. 7	7-8:30 p.m.	<ul style="list-style-type: none"> ◆ Middle School Youth Group at Moreland Presby.
Sun., Feb. 12	11:15 a.m.-noon 4:30-6 p.m. 6-7 p.m. 7-9 p.m.	<ul style="list-style-type: none"> ◆ Youth Sunday School ◆ Middle School Youth Group ◆ Confirmation Class at Moreland Pres. ◆ High School Youth Group Moreland Presby.
Sun., Feb. 19	11:15 a.m.-noon 6-7 p.m. 7-9 p.m.	<ul style="list-style-type: none"> ◆ Youth Sunday School ◆ Confirmation Class at Moreland Pres. ◆ High School Youth Group Moreland Presby.
Mon., Feb. 20	9 a.m.-3 p.m.	<ul style="list-style-type: none"> ◆ Middle School Youth Snow Day
Sun., Feb. 26	11:15 a.m.-noon 3-8 p.m.	<ul style="list-style-type: none"> ◆ Youth Sunday School ◆ FESTAVOS Auction.

Event Details:

Confirmation Classes continue Sun., Feb. 5, 12, & 19, 6-7 p.m., at Moreland Presbyterian. Our 2012 Confirmation Class continues in February with three more classes, and our location moves to Moreland Presbyterian. Stay tuned for the Confirmation Retreat which is Mar. 9-11. Talk to Josh for more information.

Potluck in the Park Sun., Feb. 5, 2-6 p.m. at O'Bryant Square in downtown Portland. Our High School youth are given the opportunity to once again serve a meal to the homeless in Portland. We will be serving an outdoor meal at O'Bryant Square, rain or shine.

(Youth Activities, cont.)

Middle School Youth Group at Moreland Presbyterian Tues., Feb. 7, 7-8:30 p.m. We are doing a special combined youth group where we get to meet with our friends at Moreland Presbyterian and find out how they do youth group. It's going to be a blast!

Middle School Youth Snow Day Mon., Feb. 20, 9 a.m.-3 p.m. Meet at Milwaukie Presbyterian to go to Mt. Hood for sledding/inner-tubing. This is a combined event for both Moreland and Milwaukie Presbyterian youth. It's going to be a lot of fun. We are going to need parent volunteers who are willing to carpool our youth. Please talk to Josh for more information.

FESTAVOS Auction Sun., Feb. 26, 3-8 p.m. Our youth are again playing a vital role in Milwaukie's annual mission auction. A percentage of the total amount from the auction will be going directly to funding our 2012 Mission Trips (Caravan Trip and City Camp). If you plan on going on either of those mission trips then you will need to volunteer at FESTAVOS. Talk to Josh for more information.

- Joshua Dunham, Youth Director





SAVE THE DATE! BRING A FRIEND!
You are cordially invited to
Milwaukie Presbyterian Church's Annual
FESTAVOS AUCTION
Sunday, February 26, 4-8 p.m. at MPC
Good Food, Good Friends, Great Causes!



Milwaukie Presbyterian's funfest day and main fundraiser for its local mission ministries and the Youth Program is back!

FESTAVOS 2012 promises to be another fantastic evening of food, music, and a silent auction jam packed with great items, useful services, vacations, and treats donated by local community members and businesses. It is the one occasion each year when the church encourages shameless coveting!

The money you bid for "must have" merchandise will be shared between the local not-for-profit agencies supported by MPC, *and* the MPC youth groups' annual mission trips. This summer, the High School Youth go to Memphis Tennessee to do home repairs through an organization called Service Over Self (SOS), and the Middle School Youth will attend City Camp, a local event. Funds earmarked for the youth mission trips will help send as many youth as possible on these trips.

Tickets will be sold each Sunday through February.



A Thought from Stewardship

Let no debt remain outstanding, except the continuing debt to love one another, for those who love their neighbor have fulfilled the law.

– Romans 13:8

Our church belongs to a larger Presbyterian community. Not only are we connected to each other in this church, we can serve as neighbors with other Presbyterians in the region and the country through the P.C.(U.S.A.).

Our Per Capita offering is a monetary example of how we join with Presbyterians across the country to serve one another.

On the website, <http://www.pcusa.org/>, one can see how our combined efforts help serve God through financial assistance, education, disaster relief, and international missions. We can love our neighbors next door, and around the world.

Kevin Bixby, Stewardship Chair

THANK YOU

- ◆ Kelley Gutman and Muzak for the donation of chairs and office furniture.
- ◆ Rusty Garrison and Diana Bennett for transporting Muzak's furniture donation.
- ◆ Sarah Carver for sending thoughtful cards to our congregation and community.
- ◆ Don Eichelberg, Camden Fobert, the Hartson family, Kelley Gutman, Lynette Hall, and Nancy Killian for Taking Down the Greens and other holiday decorations.
- ◆ The Hines family for raking leaves on the church grounds.
- ◆ Our office staff for picking up additional communication responsibilities.
- ◆ Rusty Garrison and the Spears family for donating boxes for Christmas Boxes.
- ◆ Melissa, Rick and Brooke Thomsen for stuffing envelopes for FESTAVOS.
- ◆ Our congregation, for giving so generously during the holiday season.

If you would like to thank someone in the congregation, send your thanks to news@milwaukiepres.org.

Milwaukie Presbyterian Church

2416 SE Lake Rd.

Milwaukie OR 97222-7731

www.milwaukiepres.org

503.654.7782, (fax) 503.653.5444

office@milwaukiepres.org

Office Hours

Tu.-Th. 9:30 a.m.-3:30 p.m.

Fri., 8 a.m.-2 p.m. Closed Mon.

Church Staff:

- ◆ The Rev. Katie Pate, Pastor
pastor@milwaukiepres.org
- ◆ The Rev. Kristen Hamilton-Sutherland,
Pastoral Visitor
hamland123@frontier.com
- ◆ Sam Cole, Christian Ed. Director
ce@milwaukiepres.org
- ◆ Joshua Dunham, Youth Director
youth@milwaukiepres.org
- ◆ Kevin Lambert, Music Director
music@milwaukiepres.org
- ◆ Ann Waterman, Office Coordinator/
Bookkeeper ◆ Marilyn Barnes, Office
Assistant/Custodian ◆ Apsara Long &
Sopheap Yin, Nursery Attendants

ASH
WEDNESDAY

February 22, 7 p.m. Worship



FESTAVOS
AUCTION

February 26, 4-8 p.m.